



# Joseph Branch Line Rail with Trail Concept

## The Vision

*“The Wallowa Union Trail Concept has the potential to create unique economic and natural resources benefits for the NE Region and for Oregon. These include, but are not limited to, enhanced recreational opportunities, expanded and promoted tourism, community development, small business stabilization and expansion, multidisciplinary education and career development opportunities, connection to and potential expansion of regional arts and cultural programs . . . the development of rail-with-trail facilities could encourage additional interest in visiting the region, creating new opportunities for the local economy, and enhance recreation and quality of life for local residents.”*





Nature  
HISTORY  
Discovery



## The Partnership

*“The Wallowa Union Railroad Authority, Eastern Oregon University, and Oregon Parks and Recreation Department desire to cooperatively assess the Wallowa Union Trail Concept. This Memorandum of Understanding defines the roles of each agency during the feasibility evaluation of the rail with trail concept within the Wallowa Union Rail Corridor.”*

Wallowa Union  
Rail with Trail  
Concept



Eastern  
Oregon  
University

NE Oregon  
Regional Solutions  
Center

Wallowa  
Union  
Railroad  
Authority

Oregon  
State  
Parks



Memorandum of  
Understanding



Nature  
HISTORY  
Discovery



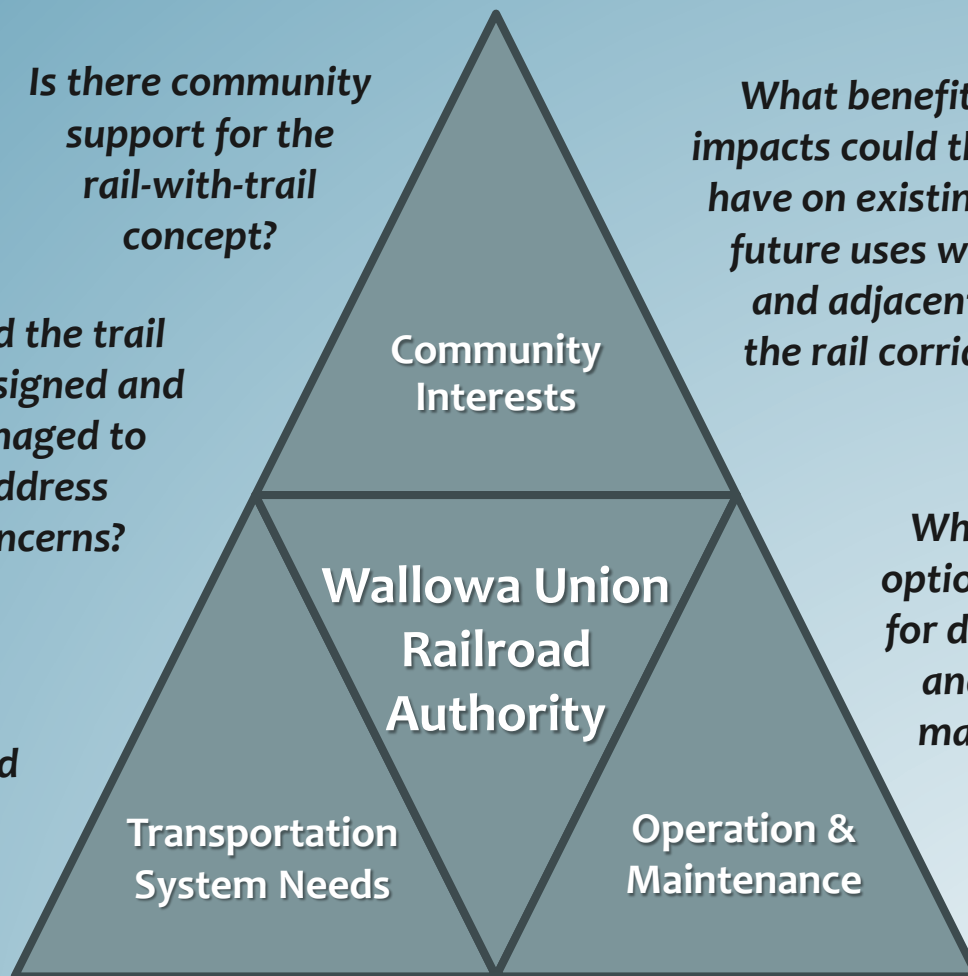
*Is there community support for the rail-with-trail concept?*

*Could the trail be designed and managed to address concerns?*

*How could a trail be accommodated within the existing rail right-of-way?*

*What benefits or impacts could the trail have on existing and future uses within and adjacent to the rail corridor?*

*What funding options are there for development and ongoing maintenance costs?*



**Joseph Branch Line  
Management Considerations**



# Scope of Work

## Phase I: Existing Conditions Assessment (Apr. – Dec. 2014)

- *Project Kick-Off Meeting (Review Scope of Work)*
- *Trail Assessment Website (Project Info for Public)*
- *Stakeholder Interviews (Public Issues / Concerns)*
- *Land Use Analysis (Zoning and Current Uses)*
- *Economic Impact Analysis (Economic Impacts of Trail Concept)*
- *Rail Corridor Assessment (Opportunities and Constraints)*
- *Historic and Cultural Properties Survey (Resource Inventory)*
- *Community Assessments (Revitalization / Business Opportunities)*





# Scope of Work

## Phase II: Trail Concept Development (Jan. – Aug. 2015)

- **Trail Concept Alternatives**  
(Design Alternatives, Mitigation Measures, Cost Estimates, Funding Options)
- **Trail Alternatives Survey**  
(Evaluates Support for Alternatives)
- **Trail Alternatives Report**  
(Committee and Public Workshops)





# Scope of Work

## Phase III: Trail Concept Report and Review (Sep. – Dec. 2015)

- **Trail Concept Report**  
(Summary of Previous Reports and Findings)
- **WURA Board Meeting Presentation**  
(Present Report and Findings for Consideration of Trail Concept)





# Trail Concept Review Committee

## Membership

- *Includes residents, business owners, organizations, agencies, and elected officials from Wallowa and Union counties.*

## Purpose / Charge

- *Guides the analysis of existing conditions, trail design alternatives, mitigation measures, strategies for engaging community members, and provides recommendations to the WURA for their consideration of the trail concept.*

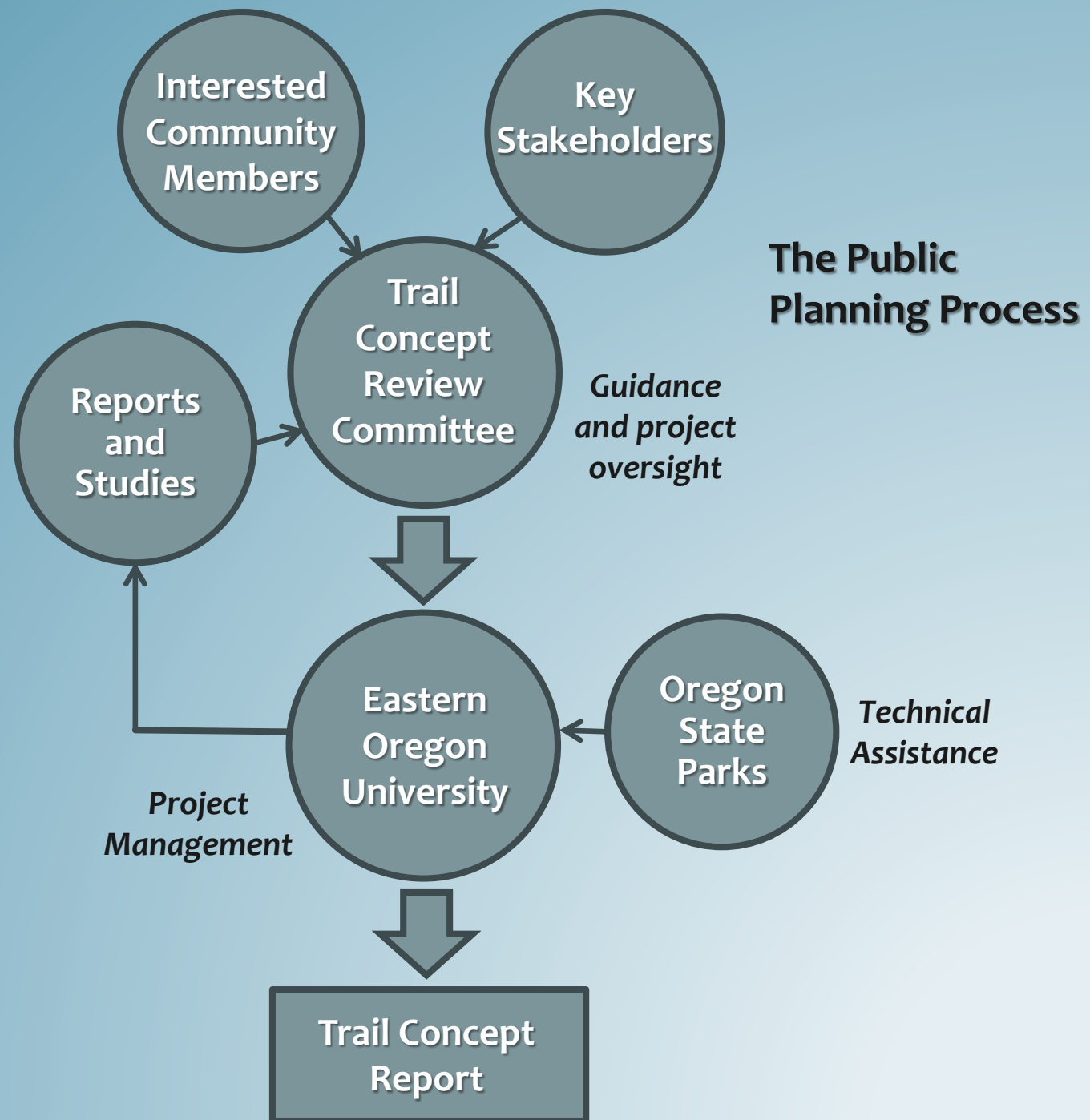
## Operating Principals

- *Committee resolves to sustain respectful and inclusive discussion; Thru collaboration and consensus-building, clear guidance can be provided to the project partners.*





Nature  
HISTORY  
Discovery





# Trail Concept Review Committee

## *Provides Input at Key Milestones (Target Dates):*

- **October 28, 2014 – Review Draft Existing Conditions Report Prior to 1<sup>st</sup> Public Workshop**
- **January 20, 2015 – Review 1<sup>st</sup> Public Workshop Input and Discuss Trail Design Alternatives**
- **May 5, 2015 – Review Draft Trail Design Alternatives and Survey Results Prior to 2<sup>nd</sup> Public Workshop**
- **October 27, 2014 – Review 2<sup>nd</sup> Public Workshop Input and Draft Trail Concept Report Recommendations**





# Trail Concept Review Committee

## Committee Introductions:

- *Name?*
- *Name of business, agency, or organization you are representing?*
- *Your interest and/or concern with the Rail with Trail Concept?*

