

# University Update

Higher Education Coordinating Commission

October 8, 2015



EASTERN OREGON  
UNIVERSITY



# Overview

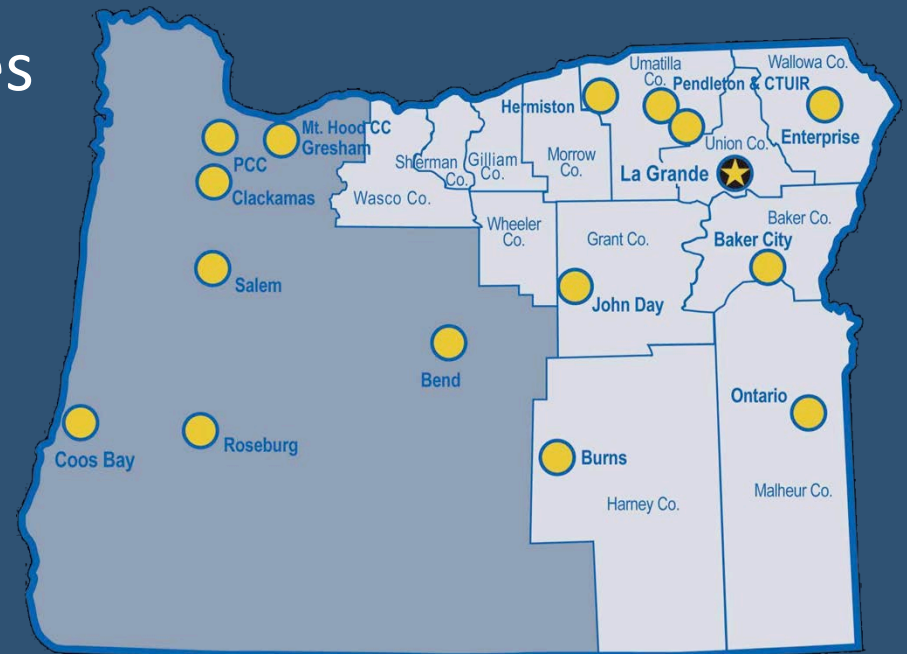
- Founded in 1929
  - Eastern Oregon Normal School
- College of Arts and Sciences
- College of Business and Education
- Pioneer in distance and online education
- Arts and cultural center of region
- Regional economic support and development
- NAIA athletics





# Overview

- Student service modalities
  - On campus (37%)
  - Online (49%)
  - Regional sites (14%)
- Partnerships:
  - Community colleges
  - OSU: Agriculture
  - OHSU: Nursing
  - OIT/Moda: Dental hygiene





# Student Profile

- 3,500 students
  - 75% Oregon residents
    - 53% from eastern Oregon (10 county) region
  - 330 student athletes
  - More than 60% are female
  - Approximately 50% are over 25 years of age
- 94% of are financial aid dependent
- 78% report finances are a barrier
  - 60% meet federal TRiO low-income requirements
  - 22% had “zero” estimated family contribution



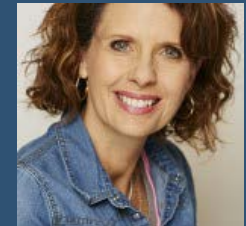
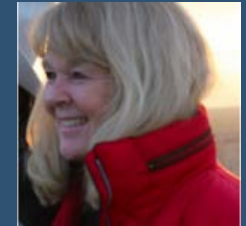
# Change in Midst of Retrenchment

- New governance structure
  - Local guidance, oversight and accountability
- New higher education structure
  - Outcomes based funding
- New president
  - Seven presidencies since 2004
  - Five sustainability plans
- Budgetary roller coaster
- Mission diversions



# EOU Board of Trustees

Passionate and Participative





# Opportunities

- Stability and focus
- Connect strategy and execution to regional needs and 40/40/20 goal
  - Pathway to higher education
    - Eastern Promise
  - Student success – retention
    - Personal touch, student support and services
  - Career or post graduate education
    - Degrees resulting in marketable skills and competencies to adapt



# Recent Actions

- Programs
  - Fire Services and Emergency Medical Services
  - Applied Science, Communication Studies, and Politics and Economics
  - Outdoor recreation leadership minor
- Increased and targeted financial aid
- Student services and campus vitality
  - TRiO Grant
  - Residence halls at capacity
  - New food service provider
  - Campus-wide Wi-Fi expansion
- Athletics
  - Men's soccer





# Pillars for Financial Sustainability



- Deliver results that deserve support
- Dramatically improve resource utilization and innovation in delivery
- Change the public conversation through outcomes
- Instill pride and foster a service culture



Eastern Oregon's University



**Together, It's Possible**