

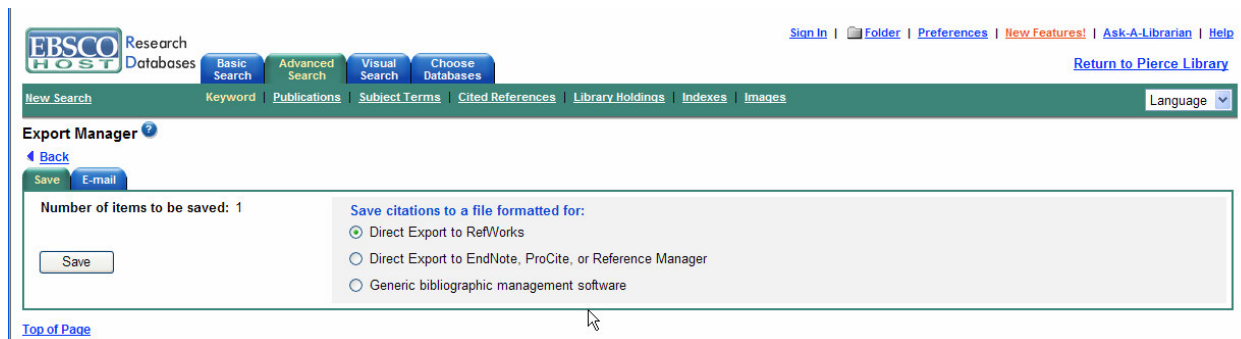
Using the Bibliographic Manager in the EBSCO Database Interface

- Open the citation software you are using as a target, and set up a folder or library to accept the citations you are going to select for this bibliography. Remember where it is on the hard drive.
- Locate an article of interest.



The screenshot shows the EBSCO Research Databases interface. At the top, there are navigation links for 'Sign In', 'Folder', 'Preferences', 'New Features!', 'Ask-A-Librarian', and 'Help'. Below this is a search bar with 'New Search' and a 'Language' dropdown. The main content area displays search results for 'The OPAC Reborn.' by Peter McCracken. The interface includes buttons for 'Print', 'E-mail', 'Save', 'Export', and 'Add to folder'. A 'View:' section offers options for 'Citation', 'HTML Full Text', and 'PDF Full Text (251K)'. The article details include the title, author, source, document type, and subject terms.

- Choose "Export".



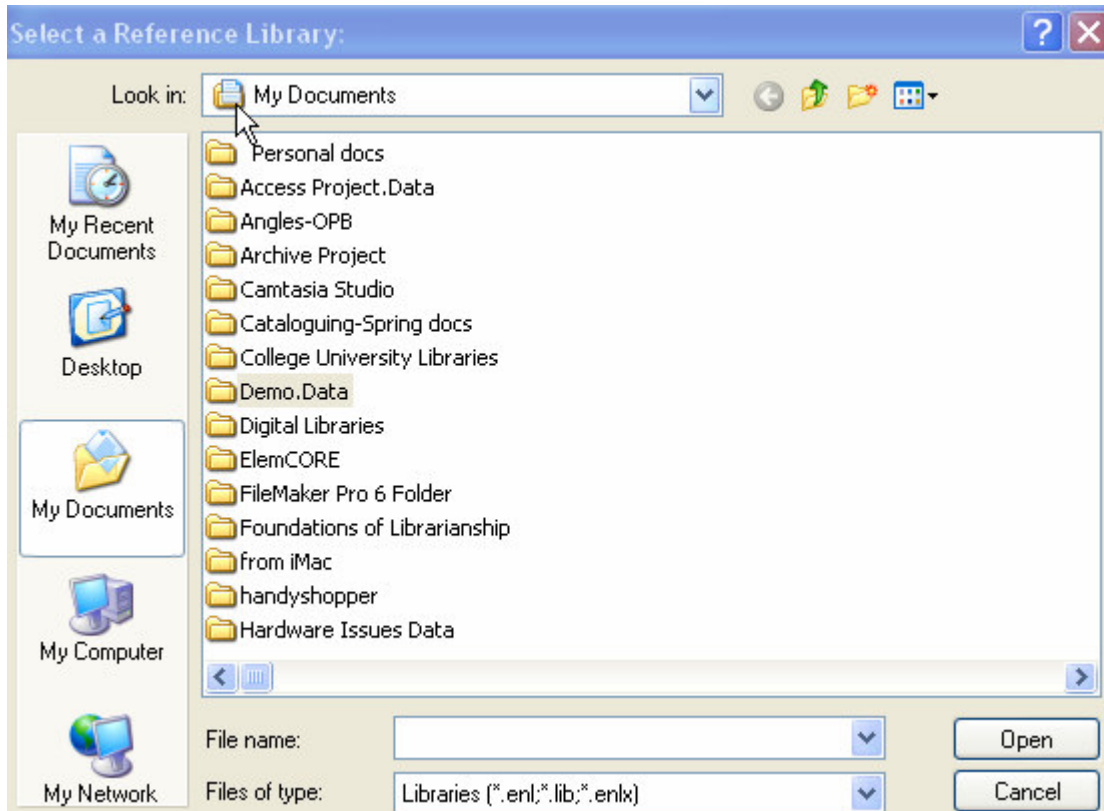
The screenshot shows the 'Export Manager' interface. It features a 'Back' button and a 'Save' button. The 'Number of items to be saved:' is set to 1. The 'Save citations to a file formatted for:' section has three radio button options: 'Direct Export to RefWorks', 'Direct Export to EndNote, ProCite, or Reference Manager', and 'Generic bibliographic management software'. A 'Top of Page' link is visible at the bottom left.

- Make a decision to what citation software you are exporting. In this case, the software is *EndNote*.

Save citations to a file formatted for:

- Direct Export to RefWorks
- Direct Export to EndNote, ProCite, or Reference Manager
- Generic bibliographic management software

- Choose "Save" and the software opens automatically to receive the citation. Navigate to the folder you set up in the first step to receive the citations and choose "Open."



- Endnote will open and you will see your citation dropped into the citation window. At this point, you can use the drop-down menu to change the format to APA, MLA, etc.

