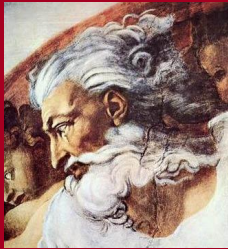


PHIL 101

Winter 2008



**Self, World,
& God**

David Hume



- 1711-76
- Philosophy
- History
- Theological beliefs
- *Dialogues*
- Posthumous publication

Dialogues

- Dialogue form
- Plato
- Galileo
- David Hume as author
- His characters
- Do any of them speak for him?



The Characters

- Hermippus
 - Believer
 - Natural theologian
- Pamphilus
 - Reliable and unreliable narrators
- Demea
 - Believer
 - Dogmatic
 - Anti-anthropomorphite
 - Weakest character
- Cleanthes
 - Believer
 - Natural theologian
 - Anthropomorphite
 - Strong character
 - Spokesperson for the teleological argument
- Philo
 - Believer?
 - Skeptic
 - Critic
 - Strong character
 - Hume?

Theological Positions

- **Theism**
 - Judaism, Christianity, Islam
 - Divine attributes – omnipotent, omniscient, morally perfect, etc.
- **Theology**
 - Revealed
 - Natural
 - Natural atheology
- **Anthropomorphism**
 - Divine attributes
 - Analogies
- **Anti-anthropomorphism**
 - Demea's quote in Part Three

Interpretive Questions

- **Hume as author**
- **Pamphilus as narrator**
- **Pamphilus's critical judgment**
- **Philo and David Hume**
- **Does Cleanthes really win?**
- **My interpretation**

Arguments

- **Can we know God's nature?**
- **Cosmological argument**
- **Teleological argument**
- **Logical problem of evil**
- **Evidential argument from evil**
- **"New" teleological argument**