



PHIL 101
Winter 2008


Self, World,
& God

CASE FOR COMMON DESCENT




- e₁. Expanded age of the earth.
- e₂. Fossil record.
- e₃. *Scala Naturae*
- e₄. Patterns of geographical distribution.
- e₅. Morphological considerations
- e₆. Embryological development
- =====
- t₀. Descent with modification

CASE FOR COMMON DESCENT

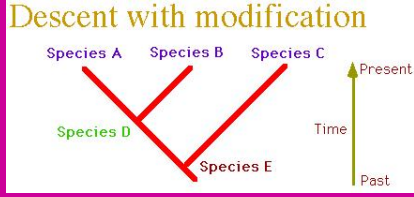


- e₁. Expanded age of the earth.
- e₂. Fossil record.
- e₃. *Scala Naturae*
- e₄. Patterns of geographical distribution.
- e₅. Morphological considerations
- e₆. Embryological development
- =====
- t₀. Descent with modification

DESCENT WITH MODIFICATION



Descent with modification

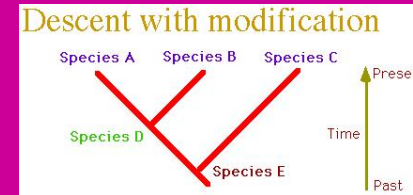
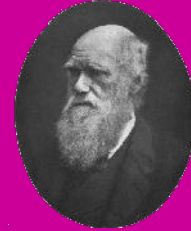


CASE FOR COMMON DESCENT



- e₁. Expanded age of the earth.
- e₂. Fossil record.
- e₃. *Scala Naturae*
- e₄. Patterns of geographical distribution.
- e₅. Morphological considerations
- e₆. Embryological development
- =====
- t₀. Descent with modification

DESCENT WITH MODIFICATION

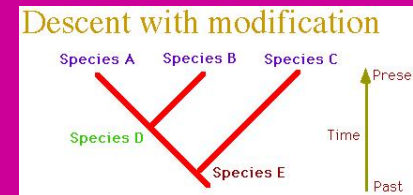
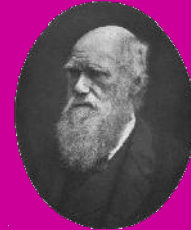


CASE FOR COMMON DESCENT



- e₁. Expanded age of the earth.
- e₂. Fossil record.
- e₃. *Scala Naturae*
- e₄. Patterns of geographical distribution.
- e₅. Morphological considerations
- e₆. Embryological development
- =====
- t₀. Descent with modification

DESCENT WITH MODIFICATION



CASE FOR COMMON DESCENT

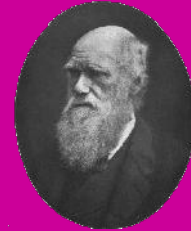


- e₁. Expanded age of the earth.
- e₂. Fossil record.
- e₃. *Scala Naturae*
- e₄. Patterns of geographical distribution.
- e₅. Morphological considerations
- e₆. Embryological development

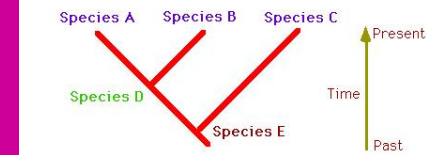
=====

t₀. Descent with modification

DESCENT WITH MODIFICATION



Descent with modification



CASE FOR COMMON DESCENT

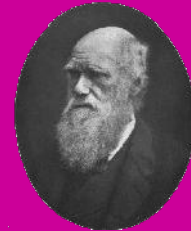


- e₁. Expanded age of the earth.
- e₂. Fossil record.
- e₃. *Scala Naturae*
- e₄. Patterns of geographical distribution.
- e₅. Morphological considerations
- e₆. Embryological development

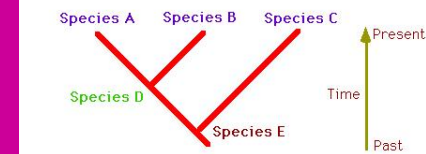
=====

t₀. Descent with modification

DESCENT WITH MODIFICATION



Descent with modification

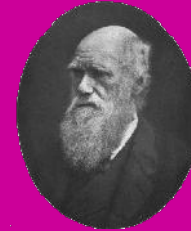


ALTERNATIVE EXPLANATIONS



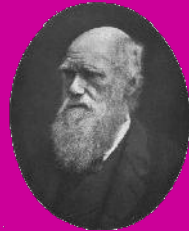
- t_0 . Descent with modification
- t_1 . Lamarkean evolution
- t_2 . Special creation
- t_3 . Something as yet undiscovered

Natural Selection



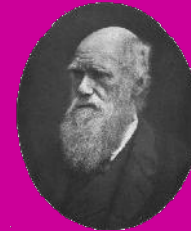
- Why the biological change implied by common descent?
- Lamarckian evolution - acquired characteristics
- Selection metaphor
- Artificial selection
- Background:
 - Expanded age of the earth
 - Malthus

CASE FOR NATURAL SELECTION



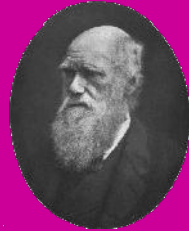
- e_1 .
- .
- .
- e_6 .
- e_7 . Artificial selection

CASE FOR NATURAL SELECTION



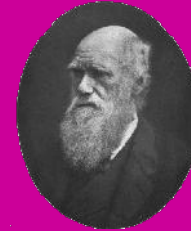
- e_1 .
- .
- .
- e_6 .
- e_7 . Artificial selection
- e_8 . Fecundity of all species

**CASE FOR
NATURAL
SELECTION**



- e₁.
- .
- .
- e₆
- e₇. Artificial selection
- e₈. Fecundity of all species
- e₉. General stability of populations

**CASE FOR
NATURAL
SELECTION**



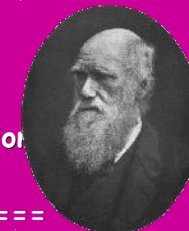
- e₁.
- .
- .
- e₆
- e₇. Artificial selection
- e₈. Fecundity of all species
- e₉. General stability of populations
- e₁₀. Limited natural resources

**FIRST
INFERENCE**



- e₁.
- .
- .
- e₆
- e₇. Artificial selection
- e₈. Fecundity of all species
- e₉. General stability of populations
- e₁₀. Limited natural resources
- =====
- t'₀. Struggle for existence

**CASE FOR
NATURAL
SELECTION**



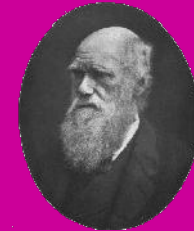
- e₁.
- .
- .
- e₆
- e₇. Artificial selection
- e₈. Fecundity of all species
- e₉. General stability of population
- e₁₀. Limited natural resources
- =====
- t'₀. Struggle for existence
- e₁₁. No two individuals are the same

CASE FOR NATURAL SELECTION



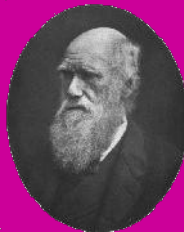
- e₁.
- .
- .
- e₆
- e₇. Artificial selection
- e₈. Fecundity of all species
- e₉. General stability of populations
- e₁₀. Limited natural resources
- =====
- t'₀. Struggle for existence
- e₁₁. No two individuals are the same
- e₁₂. Much of this variability is heritable

SECOND INFERENCE



- e₁.
- .
- .
- e₆
- e₇. Artificial selection
- e₈. Fecundity of all species
- e₉. General stability of populations
- e₁₀. Limited natural resources
- =====
- t'₀. Struggle for existence
- e₁₁. No two individuals are the same
- e₁₂. Much of this variability is heritable
- =====
- t''₀. Struggle is not completely random - natural selection

THIRD INFERENCE



- e₁.
- .
- .
- e₆
- e₇. Artificial selection
- e₈. Fecundity of all species
- e₉. Stability of populations
- e₁₀. Limited natural resources
- =====
- t'₀. Struggle for existence
- e₁₁. No two individuals are the same
- e₁₂. Much of this variability is heritable
- =====
- t''₀. Struggle is not completely random - natural selection
- =====
- t'''₀. Over many generations - origin of new species