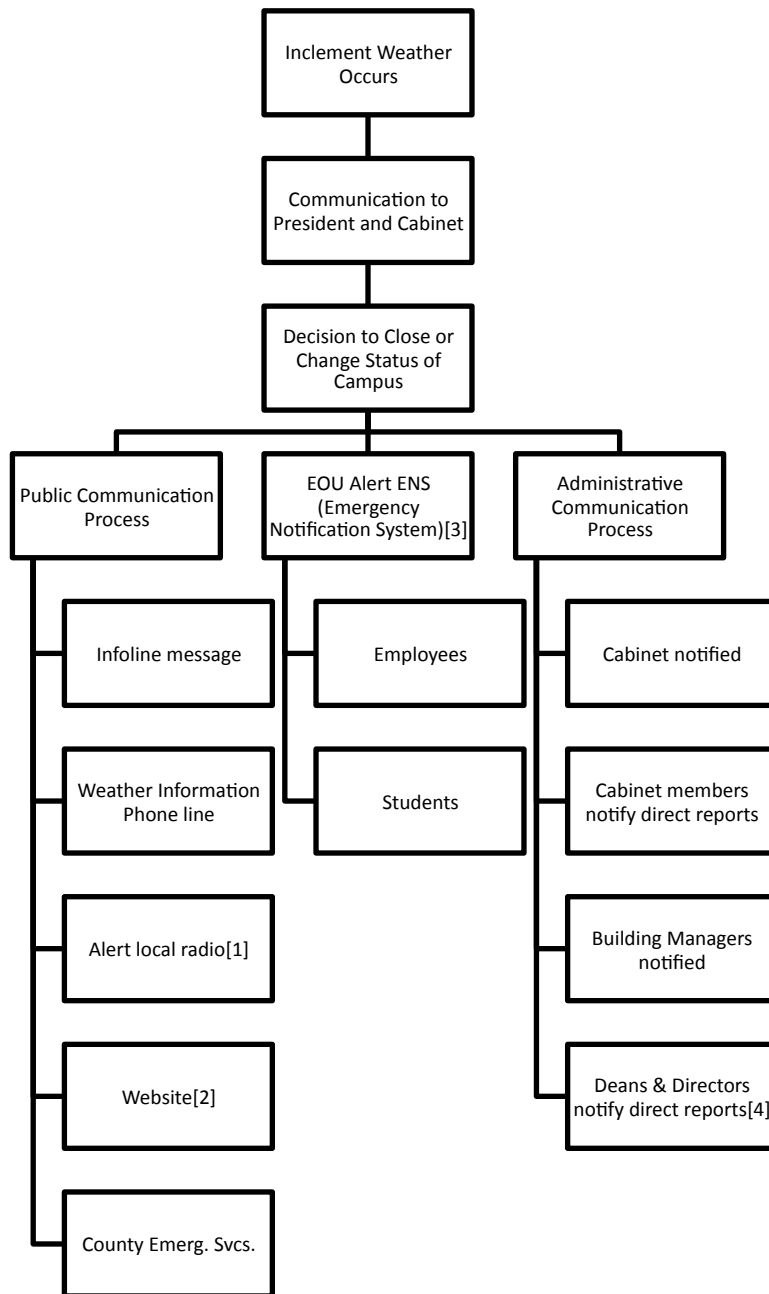




EASTERN OREGON  
UNIVERSITY

## EOU Inclement Weather Communication Process

Update: Nov. 2011



1. Using FlashNews.net statewide communication service to alert media.
2. Access to website now available off-campus.
3. ENS activated in the event of an emergency – contact users via phone/email/text.
4. Each office should have a phone tree (home and cell #) and designated callers to alert EOU employees.