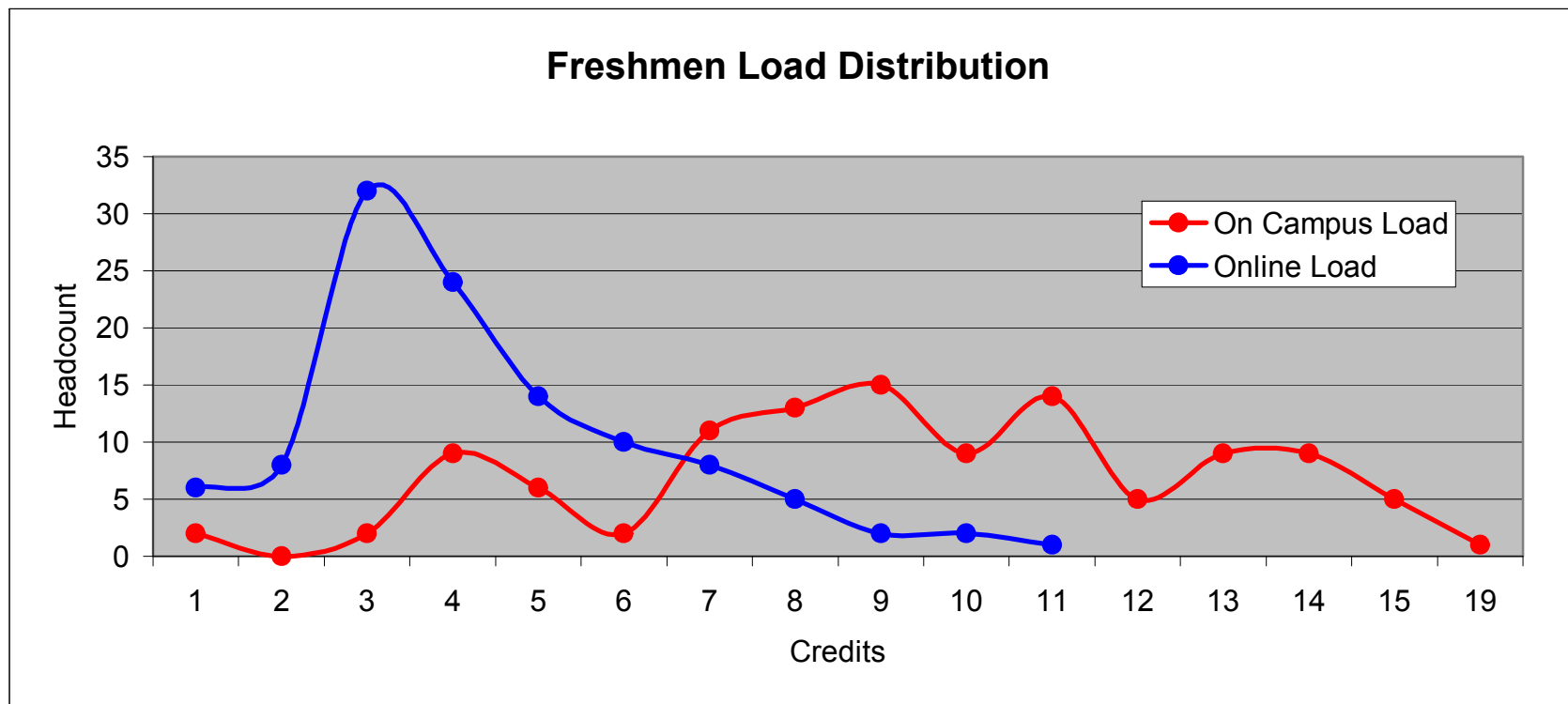


Eastern Oregon University  
 Spring 2009 Freshmen Load Distribution  
 July 1, 2009

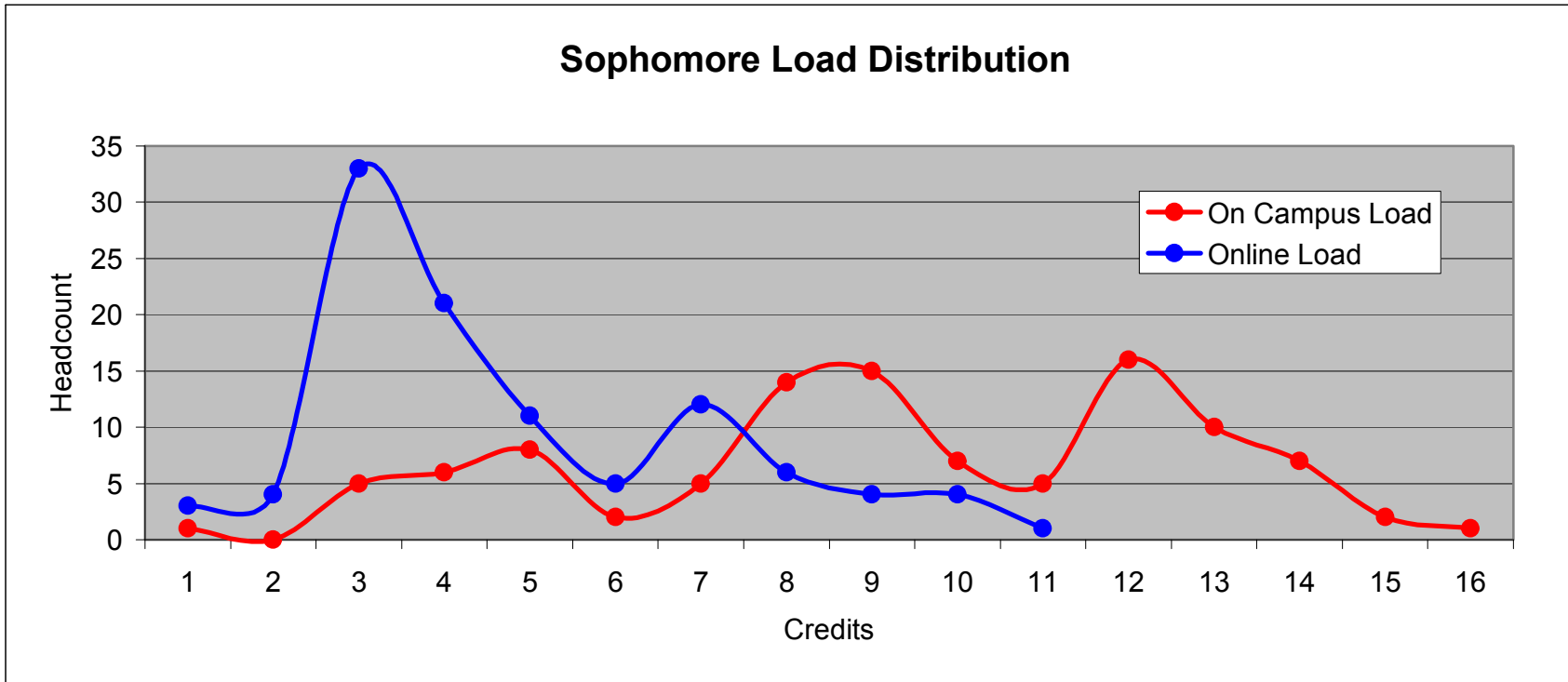


	1	2	3	4	5	6	7	8	9	10	11	12	13	14	15	19
On Campus Load	2	0	2	9	6	2	11	13	15	9	14	5	9	9	5	1
Online Load	6	8	32	24	14	10	8	5	2	2	1					

\* Nursing [OHSU], Agriculture [OSU], Cascade Campus [OSU] and Oregon Dental Services [ODS] excluded from counts

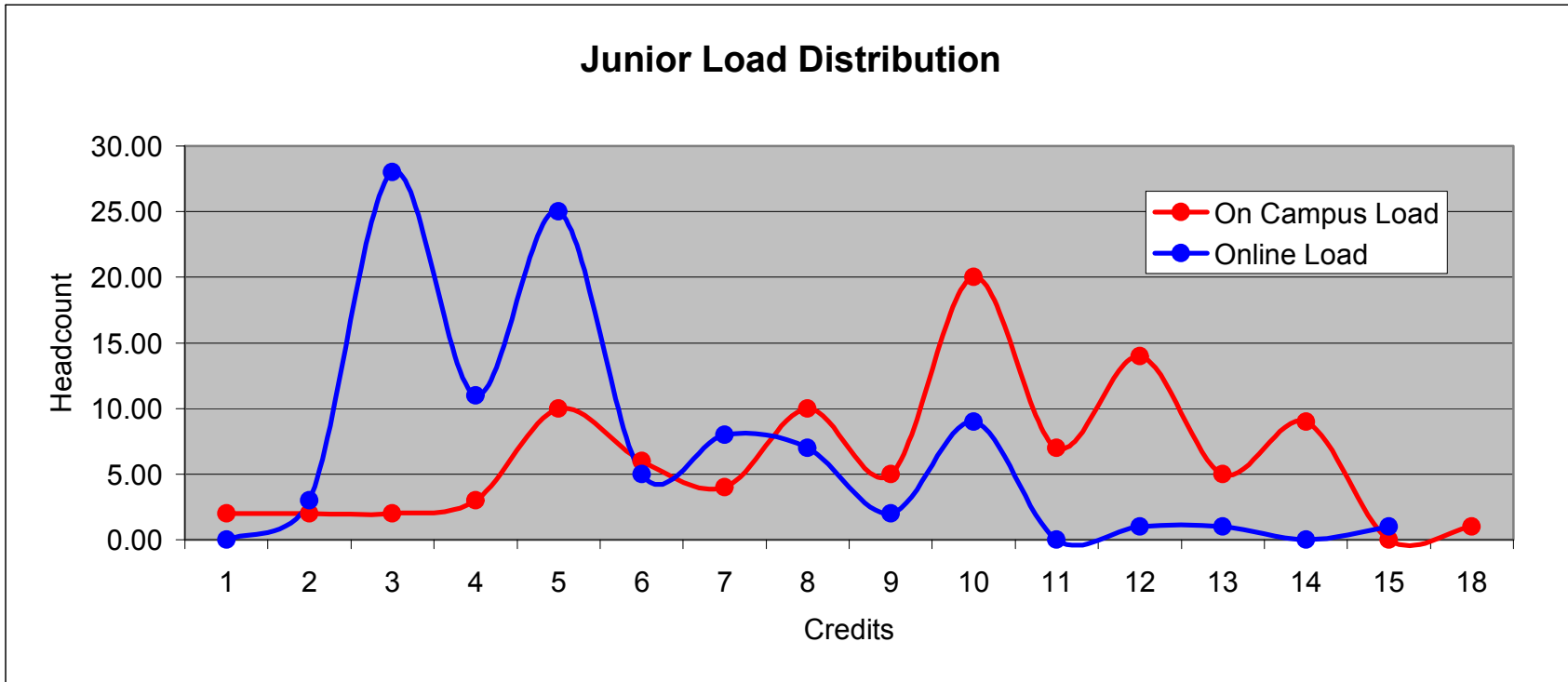
\*\* Data based on Course Location effective end-of-term

\*\*\* Excludes Graduate Courses



	1	2	3	4	5	6	7	8	9	10	11	12	13	14	15	16
On Campus Load	1	0	5	6	8	2	5	14	15	7	5	16	10	7	2	1
Online Load	3	4	33	21	11	5	12	6	4	4	1					

\* Nursing [OHSU], Agriculture [OSU], Cascade Campus [OSU] and Oregon Dental Services [ODS] excluded from counts  
 \*\* Data based on Course Location effective end-of-term  
 \*\*\* Excludes Graduate Courses

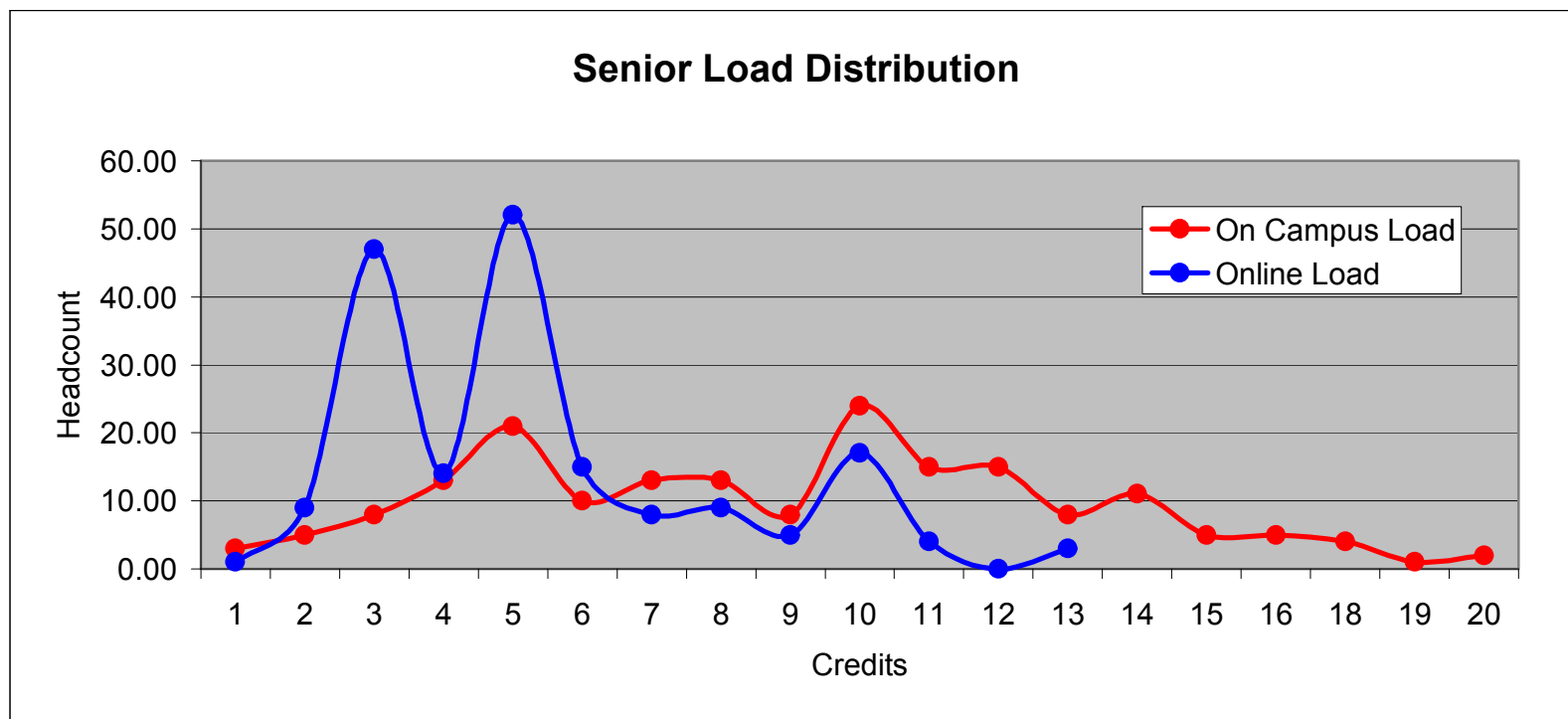


	1	2	3	4	5	6	7	8	9	10	11	12	13	14	15	18
On Campus Load	2	2	2	3	10	6	4	10	5	20	7	14	5	9	0	1
Online Load	0	3	28	11	25	5	8	7	2	9	0	1	1	0	1	

\* Nursing [OHSU], Agriculture [OSU], Cascade Campus [OSU] and Oregon Dental Services [ODS] excluded from counts

\*\* Data based on Course Location effective end-of-term

\*\*\* Excludes Graduate Courses



	1	2	3	4	5	6	7	8	9	10	11	12	13	14	15	16	18	19	20
On Campus Load	3	5	8	13	21	10	13	13	8	24	15	15	8	11	5	5	4	1	2
Online Load	1	9	47	14	52	15	8	9	5	17	4	0	3						

\* Nursing [OHSU], Agriculture [OSU], Cascade Campus [OSU] and Oregon Dental Services [ODS] excluded from counts

\*\* Data based on Course Location effective end-of-term

\*\*\* Excludes Graduate Courses