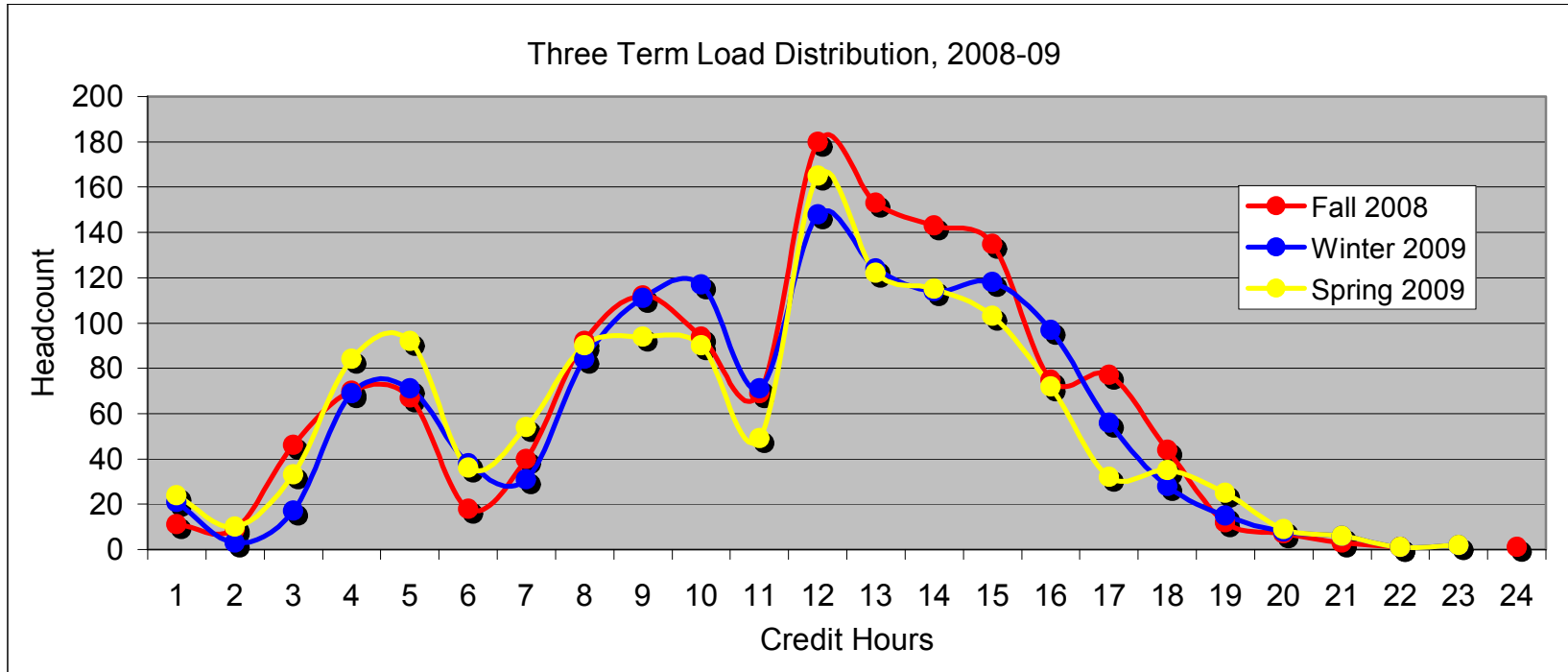


# Eastern Oregon University

## Three Term Credit Distribution (On-Campus Undergraduate)

June 26, 2009



	1	2	3	4	5	6	7	8	9	10	11	12	13	14	15	16	17	18	19	20	21	22	23	24
Fall 2008	11	9	46	70	67	18	40	92	112	94	69	180	153	143	135	75	77	44	12	7	3	1		1
Winter 2009	21	3	17	69	71	38	31	84	111	117	71	148	124	114	118	97	56	28	15	8	6	1	2	
Spring 2009	24	10	33	84	92	36	54	90	94	90	49	165	122	115	103	72	32	35	25	9	6	1	2	

\* Nursing [OHSU], Agriculture [OSU], Cascade Campus [OSU] and Oregon Dental Services [ODS] excluded from counts

\*\* Data based on state support courses effective end-of-term