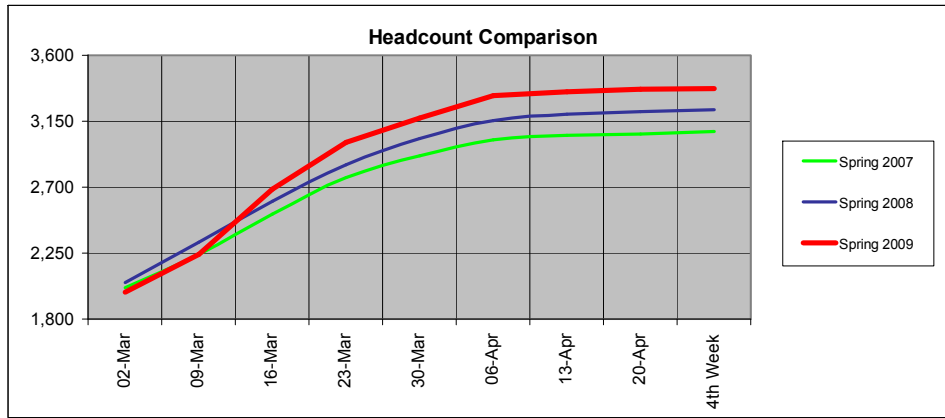
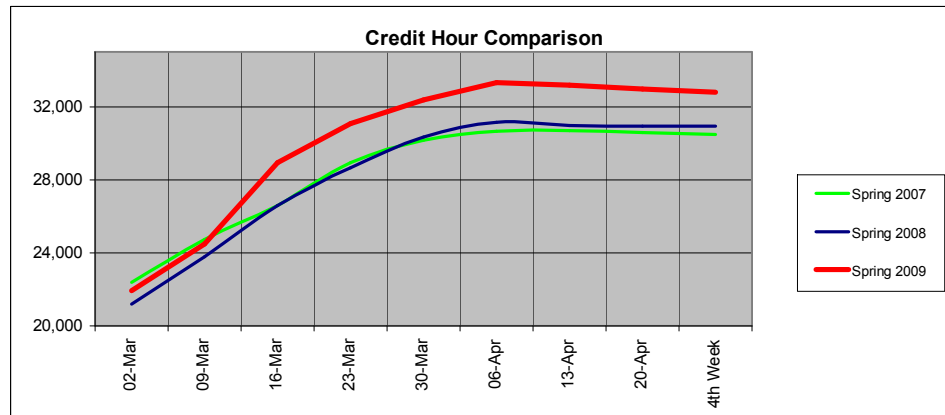


4th Week



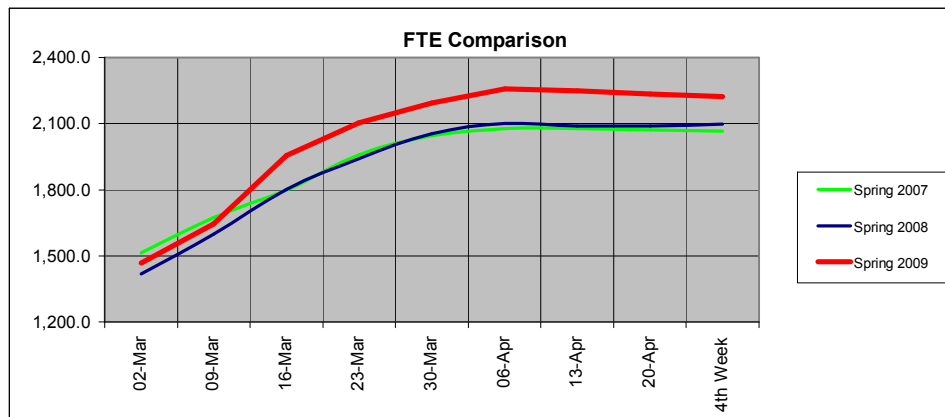
Headcount

	02-Mar	09-Mar	16-Mar	23-Mar	30-Mar	06-Apr	13-Apr	20-Apr	4th Week
Spring 2007	2,012	2,240	2,518	2,766	2,912	3,023	3,054	3,063	3,079
Spring 2008	2,050	2,326	2,606	2,853	3,030	3,156	3,198	3,214	3,230
Spring 2009	1,983	2,241	2,685	3,007	3,171	3,323	3,352	3,369	3,372
% Change 08-09	-3.3%	-3.7%	3.0%	5.4%	4.7%	5.3%	4.8%	4.8%	4.4%



Credit Hours

	02-Mar	09-Mar	16-Mar	23-Mar	30-Mar	06-Apr	13-Apr	20-Apr	4th Week
Spring 2007	22,397	24,743	26,574	28,933	30,175	30,647	30,683	30,585	30,486
Spring 2008	21,203	23,783	26,603	28,661	30,333	31,138	30,960	30,944	30,948
Spring 2009	21,912	24,486	28,947	31,058	32,355	33,314	33,168	32,965	32,779
% Change 08-09	3.3%	3.0%	8.8%	8.4%	6.7%	7.0%	7.1%	6.5%	5.9%



FTE

	02-Mar	09-Mar	16-Mar	23-Mar	30-Mar	06-Apr	13-Apr	20-Apr	4th Week
Spring 2007	1,514.1	1,674.6	1,798.6	1,959.3	2,044.3	2,076.3	2,078.8	2,071.1	2,066.5
Spring 2008	1,417.4	1,599.4	1,800.2	1,939.9	2,054.1	2,100.6	2,090.1	2,089.8	2,098.8
Spring 2009	1,467.4	1,645.4	1,956.4	2,104.4	2,193.4	2,257.6	2,247.9	2,234.2	2,221.8
% Change 08-09	3.5%	2.9%	8.7%	8.5%	6.8%	7.5%	7.6%	6.9%	5.9%